



Eastside Camera Club News Letter

Shelby Township Activities Center, 14975 21 Mile Rd

Website - <https://www.eccmacomb.com/>

Facebook - <https://www.facebook.com/groups/eastsidecameraclub>

Flickr - <https://www.flickr.com/groups/1033583@N21/>

Hash Tag: #eastsidecameraclub



[New Members](#) | [Group Outings](#) | [Group Meetings](#) | [News](#) | [Calendar](#)

New Members

Bob McGarry

Group Outings

April 5th Cuyahoga Valley NP

May 8th Shelby Fire Station

July 12th Applewood Estate-
Flint

Group Meetings

April 17th:

Special Assignment: [Action/](#)
[Movement/](#) [Blur](#)

Group Shoot & Very Best

May 15th:

Special Assignment: [Long](#)
[Exposure](#)

Nature & Very Best

June 19th:

Special Assignment: [1st](#)
[Responders/Patriotic](#)

Color Creative & Very Best

July 17th:

Special Assignment: Street
Photography with people
Monochrome & Very Best

Club Shirts

Shirts are available for order, check your email for complete details.



Reminder

I would like to know what everyone is using for their **primary** editing software. If you could send me an email with what software you are using it will help me in the future.

Pete. peter.drellick@gmail.com

Photographic Terms

Tim has provided us a list of **Photographic Terms** here is the link: [Photographic Terms](#)



Community Events

[5th Royal Oak Bourbon Fest](#)
April 5th 5-7:30 pm

[ECC Cars and Coffee](#)
April 12th 9-Noon

Congressional Student Art
Show: Mount Clemens
Library April 20th - May 8th

[A Walk through History](#)
Where: Michigan Military
Technical & Historical
Society. 16600 Stephens,
Eastpointe, MI 48021
April 12th 10-3pm



Monthly Training

- [Delete you old Lightroom Catalogs](#)
- [Remove Electric Lines](#)
- [Lightroom Basics: A Beginner's Guide](#)
- [How to Create Presets in Luminar Neo](#)
-

Group Outings

April 5th Cuyahoga Vally National Park :

Meet at Brandywine Falls around 9:00 am:
8176 Brandywine Rd, Northfield, OH 44067

May 8th, 7pm Shelby Township Fire Station #1:

Heading out to the Fire House to get some pictures of fire trucks and first responders.

July 12th **Applewood Estate** - Flint:

Applewood is the historic hime of automotive pioneer Charles Stewart Mott and family.

Who to Follow?

[Harold Ross](#) (light painting)
[PHLEARN](#) (YouTube)
[Camera Club Live](#) (YouTube)

If you have someone you think we should be following let me know and I will add them to the newsletter.

Code of Practice for Nature Photographers:

In light of the reports of the owls at Lake Saint Clair Metro Park being scared off due to people not following the rules and staying on the path, Bill has provided us with some guidelines from the Photographic Society of America (PSA) for Nature Photographers.

The Code of Practice may serve as a guide for all photographers to follow in order to help protect all nature subjects and the environment.

Always be considerate of your subjects, be they animal, vegetable or mineral. Killing or injuring any living thing is not a proper part of our nature photography.





Previous Monthly Trainings

- [Delete you old Lightroom Catalogs](#)
- [Mastering Cycling Photography Tips](#)
- [Cycling Photo Tips](#)
- [How To PROPERLY USE Lightroom PROFILES](#)
- [Here's how to upgrade your compositions FAST](#)
- [Making sun stars 2min video](#)
- [Macro Photography Guide for Beginners](#)
- [Panning Photography Made Simple](#)
- [7 Step Advanced Black & White Editing in Lightroom](#)
- [Adding Copyright and Contact Information to Photographs in Lightroom](#)
- [Long Exposure Photography](#)

Eastside Camera Club, a club member of the [Photographic Society of America](#)



Cont'd from page 2

Nature Photographers:

The ethical nature photographer should not participate in, nor endorse, the practice of sacrificing a living animal for the purpose of photographing a predator actually killing live prey under controlled conditions.

Be courteous to your fellow photographers.

For the good of nature photography, observe normal courtesies. Permission should be obtained before trespassing on land on which there is not customarily free access.

Be familiar with the life history and geographic or geologic setting of your subject. The more complex the life form and rarer the species, the greater your knowledge, care and respect should be. This same knowledge will help you tell better stories with your nature images.

Abide by all requests of rangers and wardens in National and State Parks and wildlife refuges.

Thanks to Bill for this information.

Rembrandt lighting:

Last months meeting we had a discussion about Rembrandt lighting, Bill Buchanan took some time and put together the following information about Rembrandt lighting.

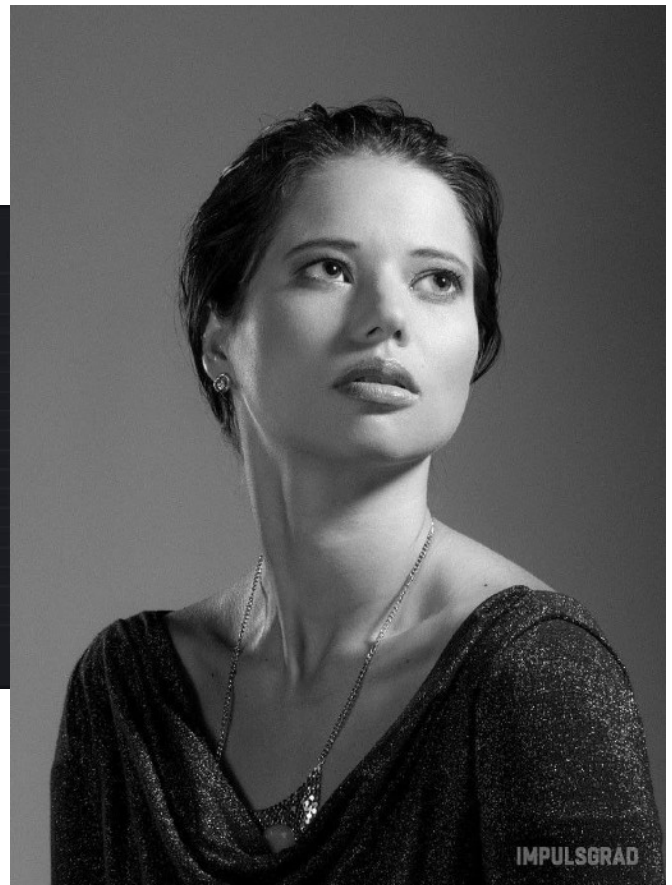
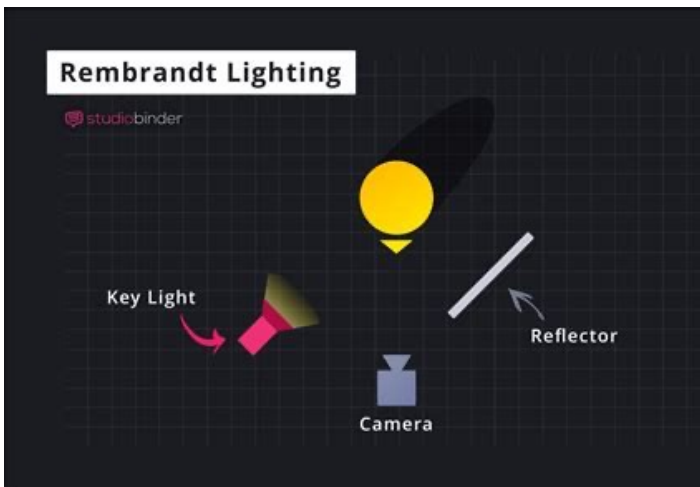
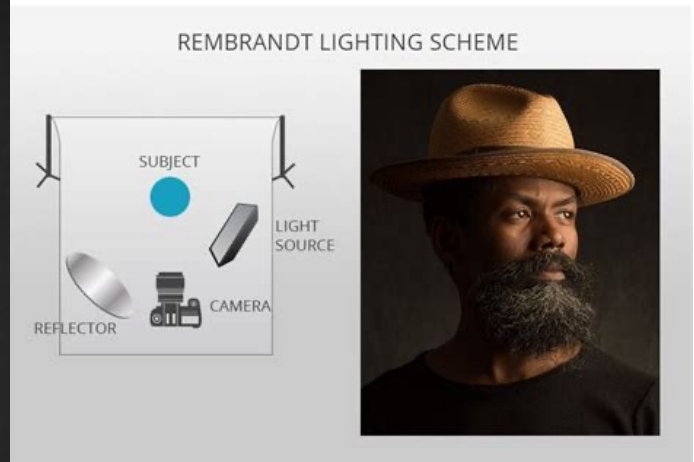
Rembrandt lighting is a portrait lighting technique commonly used in photography, cinematography, and painting. It creates a dramatic contrast between light and shadow, with a distinctive triangular patch of light on the shadowed side of the subject's face. This triangle appears on the cheek opposite the light source, under the eye, and is typically no wider than the eye itself. The technique is named after the Dutch painter Rembrandt, who often used this lighting style in his paintings to create depth and emphasize the subject's form.



Cont'd from page 3

Rembrandt lighting:

Rembrandt lighting is typically achieved using a single light source placed at a 45-degree angle to the subject, slightly above eye level.



"Your camera takes really nice pictures." Thanks I taught it everything it knows...

2025 Calendar

2025 Eastside Camera Club Calendar

Revision #2 February 2025

	Group Meeting	Special Assignment - 2 per meeting	Very Best - 1 per meeting	Rotating - 2 per meeting	Group Shoots	Coordinator
January	16	Kogarashi - A Cold Wind That Ushers In Winter	Very Best	Nature	11 - Harley Ensign / Lake St Clair Metro Park	Pete D
					30 - Indoor	Glen S
February	20	Table Top / Macro	Very Best	Color Creative		
March	20	Transportation	Very Best	Monochrome	15 - Lexus Dome	Germaine F
April	17	Action / Movement / Blur	Very Best	Group Shoot	5 - Cuyahoga Valley NP	Tim G
May	15	Long Exposure	Very Best	Nature	8 Shelby Twp Fire Station #1 (23 Mile Rd)	Glen S
June	19	1st Responders / Patriotic	Very Best	Color Creative		
July	17	Street Photography (with people)	Very Best	Monochrome	12 - Applewood Estate (in Flint)	Glen S
August	21	Flowers / Floral / History / Old	Very Best	Group Shoot	16 - Aramada Fair	Glen S
September	18	Rural / Country	Very Best	Nature	13 - Detroit Night	Jeff B
October	16	Detroit / City / Urban	Very Best	Color Creative	4 - Belle Isle	Pete D
					9 - Print Competition Mounting	Glen S / Jeff B / Pete D
November	20	Reflections (preferably upside down)	Very Best	Monochrome		
December	18	Best 10			6 - Pere Marquette 1225	Jeff B
January 2026	15	Trains / Trams / Busses	Very Best	Group Shoot		

1

Contribute to your newsletter!

If you have stories or other information for the club
please forward it to:

Pete Drellick @ peter.drellick@gmail.com



Website - <https://www.eccmacomb.com/>

Facebook - <https://www.facebook.com/groups/eastsidecameraclub>

Flickr - <https://www.flickr.com/groups/1033583@N21/>

Hash Tag: #eastsidecameraclub